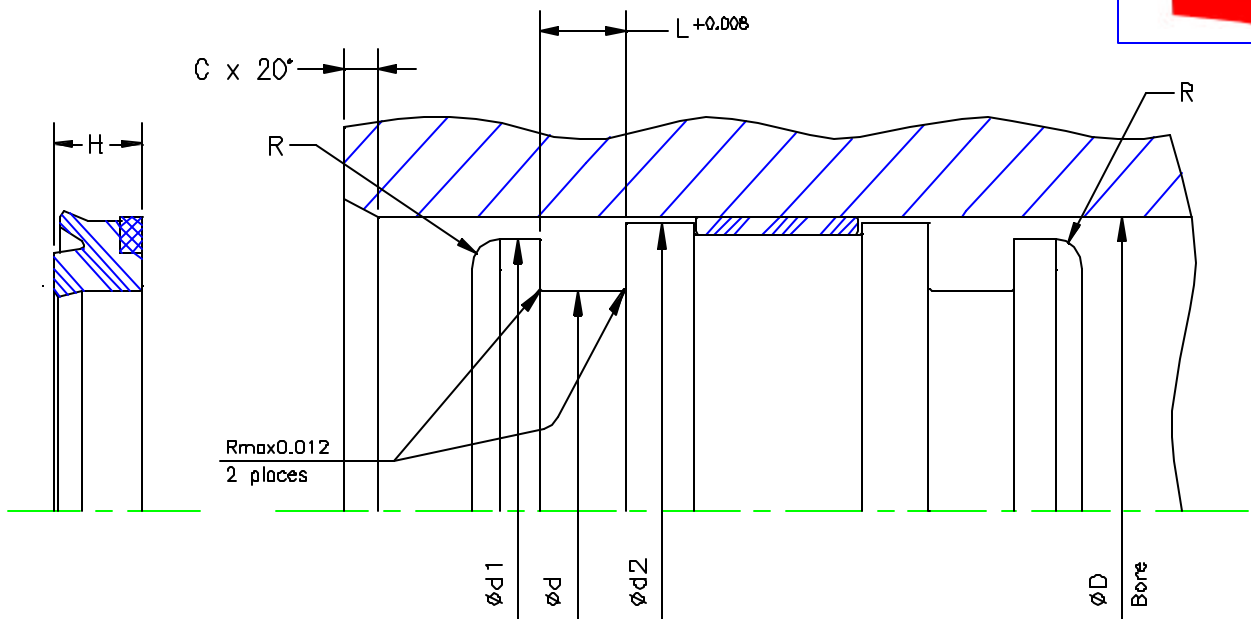
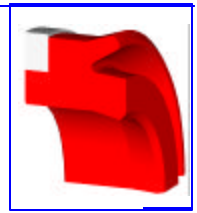


# Heavy Duty Piston U-cup

## Hardware Specifications

### Type: 227 Series



	B	L	H	D	R typical	C
series 1	0.250	0.619	0.563	d + 0.500	0.016	0.160
series2	0.375	0.688	0.625	d + 0.750	0.016	0.250
series3	0.500	0.825	0.750	d + 1.000	0.016	0.300

Pressure	E
<1500 psi	0.020
<3600 psi	0.014
<6000 psi	0.009

The extrusion gap "E" is suitable for pressure up to 6000psi and temperatures up to 175 Deg F. For higher pressures or temperatures please consult with us prior to finalizing your design.

### Applications:

The P27 Series has been specifically designed for cylinders operating with fire safe fluids or for those which will experience high side loading and deflection at high operating pressures or temperatures.

Typical applications include:

- Mobile Hydraulics - Struts & Jacks
- Steel Mill Applications - Caster Cylinders
- Mining Industry - Jacks & Cylinders

Pressure	6000psi ( 400 bar )	
Speed	1.65 ft/sec ( 5 m/s )	
Media - Temp compatibility	Min (F)	Max (F)
Hydraulic oil	-38	250
Water based Emulsions	40	140
Water Glycol	-38	140
Water	40	130
Polyol Ester	-38	150