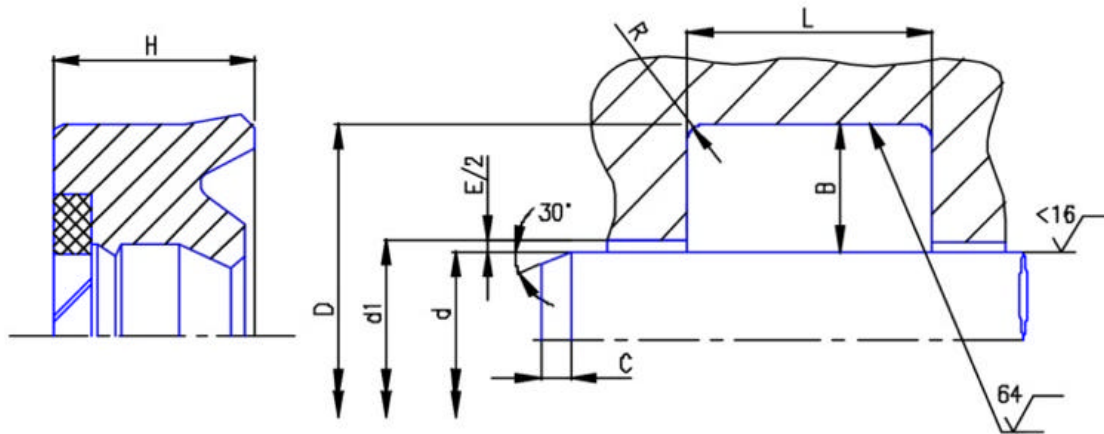


# Heavy Duty Rod U-Cup

## Hardware Specifications

### Type: 136 Series



	B	L	H	D	R typical	C
series1	0.250	0.413	0.375	d + 0.500	0.008	0.195
series2	0.375	0.619	0.563	d + 0.750	0.015	0.195
series3	0.500	0.825	0.750	d + 1.000	0.015	0.250
series4	0.563	0.928	0.844	d + 1.125	0.020	0.295
series5	0.625	1.031	0.938	d + 1.250	0.040	0.295
series6	0.750	1.238	1.125	d + 1.500	0.040	0.400
series7	1.000	1.650	1.500	d + 2.000	0.040	0.500

Pressure	E
<1500 psi	0.020
<3600 psi	0.014
<6000 psi	0.009

Under certain conditions the extrusion gap can be increased, please consult our technical department.

Groove dimensions for sizes not listed in the following pages can be calculated from the table above.

### Operating Conditions:

The operating conditions listed are based on our standard Polyurethane material. Other materials are available for special applications. In certain applications pressure rating can be increased with adjustment of extrusion gap E.

#### Material : P03/001 Standard & L01/001

<b>Pressure</b>	6000psi ( 400 bar )	
<b>Speed</b>	1.65 ft/sec ( 0.5 m/s )	
<b>Media - Temp compatibility</b>	Min (F)	Max (F)
Hydraulic oil	-38	250
Water based Emulsions	40	140
Water Glycol	-38	140
Water	40	130
Polyol Ester	-38	150